

### Surface-mounting Switches with a Sealed Structure for High Reliability.

#### Available on Embossed Tape

- Sealed construction conforming to IP67 (IEC-60529) provides high contact reliability in locations exposed to dust or water. (\* Excluding the terminal section.)
- Surface-mounting terminals for high-density mounting.
- Ground terminal available to protect against static electricity.
- Available in embossed taping packages for automatic mounting.



RoHS Compliant

### ■ List of Models

#### 6 × 6 mm Models

| Operation type  | Contact material | Height | Operating force (OF) | Plunger color | Without ground terminal |                      |                 |                      | With ground terminal |                      |                 |                      |
|-----------------|------------------|--------|----------------------|---------------|-------------------------|----------------------|-----------------|----------------------|----------------------|----------------------|-----------------|----------------------|
|                 |                  |        |                      |               | Bags                    |                      | Embossed taping |                      | Bags                 |                      | Embossed taping |                      |
|                 |                  |        |                      |               | Model                   | Minimum packing unit | Model           | Minimum packing unit | Model                | Minimum packing unit | Model           | Minimum packing unit |
| B3S-1000 Series | Silver plated    | 4.3 mm | 1.57 N {160 gf} max. | Ivory         | B3S-1000                | 100 pcs              | B3S-1000P       | 1,000 pcs            | B3S-1100             | 100 pcs              | B3S-1100P       | 1,000 pcs            |
|                 |                  |        | 2.26 N {230 gf} max. | Yellow        |                         |                      | B3S-1002        |                      | B3S-1002P            |                      | B3S-1102        |                      |

**Note:** Switches in bags must be ordered in units of 100 Switches, and Switches on embossed taping must be ordered in units of 1,000 Switches.

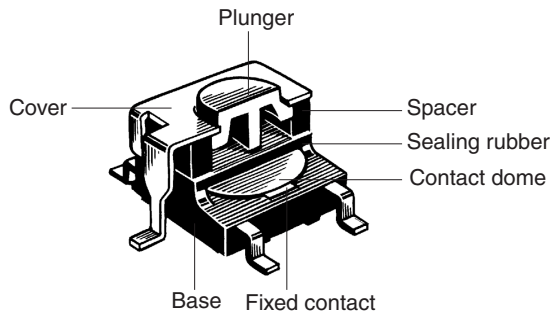
### ■ Ratings/Characteristics

|   |  |
|---|--|
| Rating (resistive load)                   | 1 to 50 mA, 3 to 24 VDC  |
| Minimum applicable load (reference value) | 10 μA at 1 VDC (resistive load)  |
| Ambient operating temperature             | -25°C to +70°C at 60%RH max. (with no icing or condensation)   |
| Ambient operating humidity                | 35% to 85% (at +5 to +35°C)  |
| Contact form                              | SPST-NO  |
| Contact resistance (initial value)        | 100 mΩ max.  |
| Insulation resistance                     | 100 MΩ min. (at 250 VDC with insulation tester)  |
| Dielectric strength                       | 500 VAC, 50/60 Hz for 1 min  |
| Bounce time                               | 5 ms max.  |
| Vibration resistance                      | Malfunction: 10 to 55 Hz, 1.5-mm double amplitude  |
| Shock resistance                          | Destruction: 1,000 m/s <sup>2</sup> {approx. 100G} max.<br>Malfunction: 100 m/s <sup>2</sup> {approx. 10G} max.                  |
| Durability                                | Standard force models (1.57 N {160 gf}): 500,000 operations min.<br>High-force models (2.26 N {230 gf}): 300,000 operations min. |
| Weight                                    | Approx. 0.3 g  |
| Degree of protection                      | IEC IP67   |
| Washing                                   | Possible   |

### ■ Operating Characteristics

| Item                 | Type<br>Operating force (OF)<br>Model     | B3S Series           |                    |
|----------------------|---|----------------------|--------------------|
|                      |   | 1.57 N<br>B3S-1□00   | 2.26 N<br>B3S-1□02 |
| Operating force (OF) | 1.57 N {160 gf} max.                      | 2.26 N {230 gf} max. |                    |
| Releasing force (RF) | 0.2 N {20 gf} min.                        | 0.49 N {50 gf} min.  |                    |
| Pretravel (PT)       | 0.25 <sup>+0.2</sup> / <sub>-0.1</sub> mm |                      |                    |

■ Model Structure



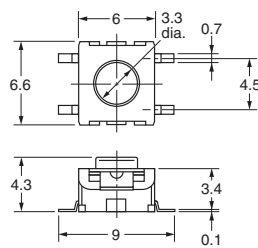
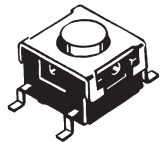
■ Dimensions (Unit: mm)

**Note:** The numbers used for terminals in the following graphics are indicated in the "Bottom View" diagram below. In this diagram, the Switch is rotated so that the terminals are on the right and left-hand sides, and the OMRON logo appears the right way up.

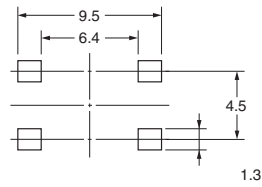


**Without Ground Terminal**

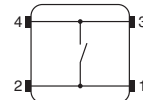
B3S-1000  
B3S-1002



**PCB Pad (Top View)**

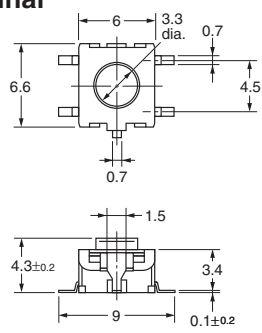
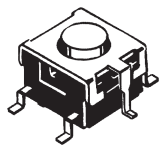


**Terminal Arrangement /Internal Connections (Top View)**

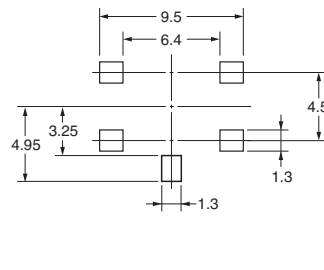


**With Ground Terminal**

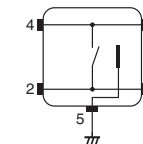
B3S-1100  
B3S-1102



**PCB Pad (Top View)**



**Terminal Arrangement /Internal Connections (Top View)**



**Note:** Unless otherwise specified, a tolerance of  $\pm 0.3$  mm applies to all dimensions. No terminal numbers are indicated on the Switches.

■ Precautions

Be sure to read the safety precautions common to all Tactile Switches for correct use.

Please check each region's Terms & Conditions by region website.

---

## OMRON Corporation

Electronic and Mechanical Components Company

### Regional Contact

**Americas**

<https://www.components.omron.com/>

**Asia-Pacific**

<https://ecb.omron.com.sg/>

**Korea**

<https://www.omron-ecb.co.kr/>

**Europe**

<http://components.omron.eu/>

**China**

<https://www.ecb.omron.com.cn/>

**Japan**

<https://www.omron.co.jp/ecb/>