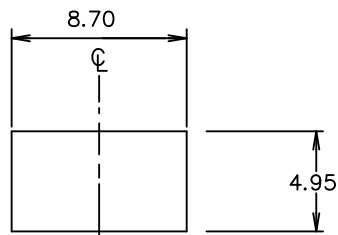
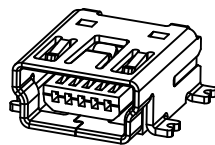


REVISION AC

DO NOT SCALE FROM THIS PRINT

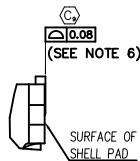
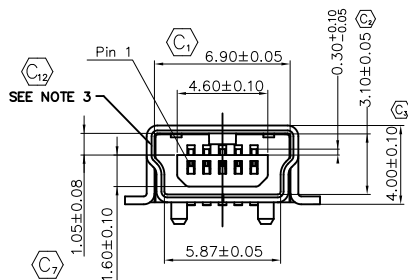
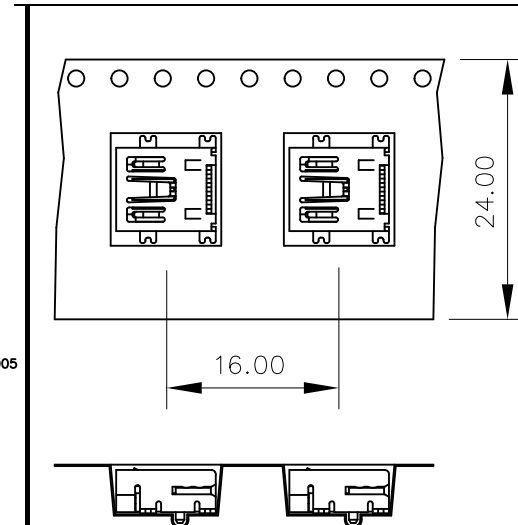
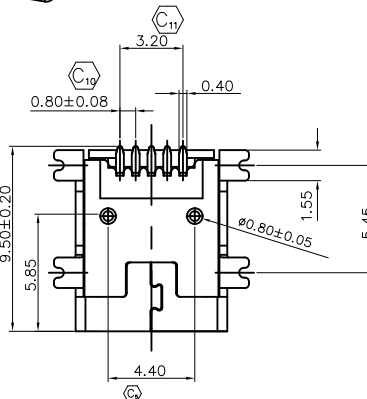
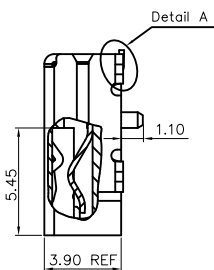
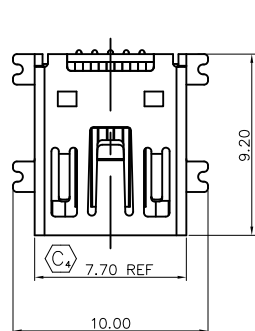


SUGGESTED PANEL CUTOUT DIMENSIONS

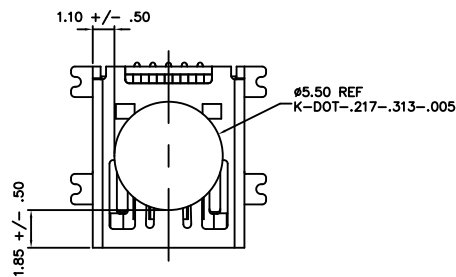


MUSB-05-X-B-SM-A-X-XX

- NO. OF CONTACTS -05
- PLATING -F: 1 μm FLASH GOLD ON CONTACT AREA, BRIGHT ACID TIN ON TAIL
-S:30 μm SELECTIVE GOLD ON CONTACT AREA, BRIGHT ACID TIN ON TAIL
- OPTION
 - TR: TAPE & REEL PACKAGING (LEAVE BLANK FOR TRAY PACKAGING)
 - K: KAPTON PAD
- E & I OPTION
 - R: RoHS COMPLIANT
- ALIGNMENT PINS
- RA TERMINATION
 - SM: SURFACE MOUNT
- TYPE -B



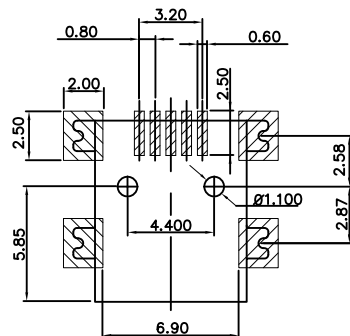
DETAIL A SCALE 2:1



PAD PLACEMENT

NOTES:

1. Ⓢ REPRESENTS CRITICAL DIMENSION.
2. NOTE DELETED.
3. CONFIRM THAT PARTS FACE MATCH THIS PRINT.
4. ALL PARTS RoHS COMPLIANT AS OF REVISION M.
5. PARTS TO BE PACKAGED LEADS DOWN IN TRAYS.
6. COPLANARITY MEASUREMENT SHOULD INCLUDED ALL USB TAILS AND SHELL TABS.



RECOMMENDED PCB LAYOUT

USER DIRECTION OF UNREELING
POCKET NOT DETAILED

-TR: TAPE & REEL OPTION

UNLESS OTHERWISE SPECIFIED, DIMENSIONS ARE IN MILLIMETERS. TOLERANCES ARE:

DECIMALS ANGLES
 .X: ±.25 3°
 .XX: ±.13
 .XXX: ±.05

PROPRIETARY NOTE
 THIS DOCUMENT CONTAINS CONFIDENTIAL AND PROPRIETARY INFORMATION AND ALL DESIGN, MANUFACTURING, REPRODUCTION, USE, PATENT RIGHTS AND SALES RIGHTS ARE EXPRESSLY RESERVED BY SAMTEC, INC. THIS DOCUMENT SHALL NOT BE DISCLOSED, IN WHOLE OR PART, TO ANY UNAUTHORIZED PERSON OR ENTITY NOR REPRODUCED, TRANSFERRED OR INCORPORATED IN ANY OTHER PRODUCT IN ANY MANNER WITHOUT THE EXPRESS WRITTEN CONSENT OF SAMTEC, INC.

DO NOT SCALE DRAWING
 INSULATOR: LCP, RATED UL 94V-0, BLACK
 CONTACT: COPPER ALLOY
 SHELL: COPPER ALLOY

SHEET SCALE: 1:2

MAX FLASH ALLOWED: .051
 MAX GATE VESTIGE: .051
 F:\DWG\MISC\MKTG

samtec

520 PARK EAST BLVD. NEW ALBANY, IN 47150
 (812) 944-6733 P.O. BOX 1147 TWX: 810-540-4085

DESCRIPTION:
 Mini USB, RA, 5 Pin, Type B, Single, SMT

DWG. NO.
 MUSB-05-X-B-SM-A-X-XX

BY: J. WOOL 12/26/03 SHEET 1 OF 1

CODE: 55322