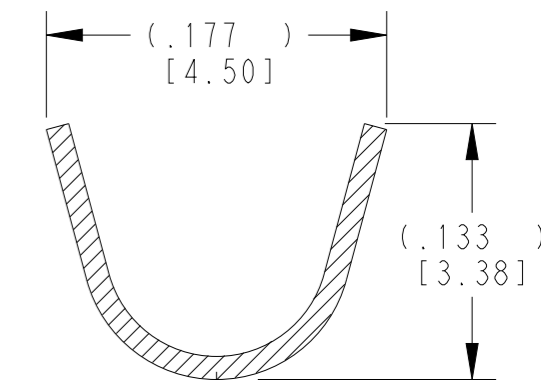
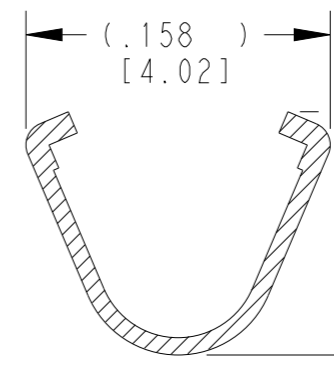
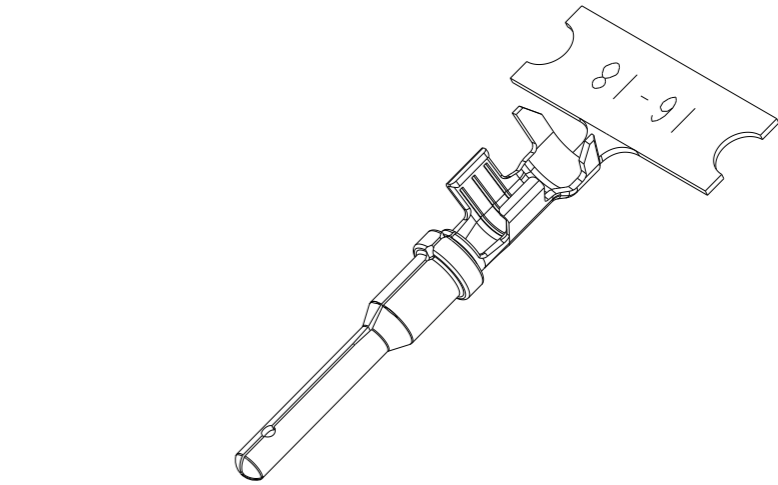
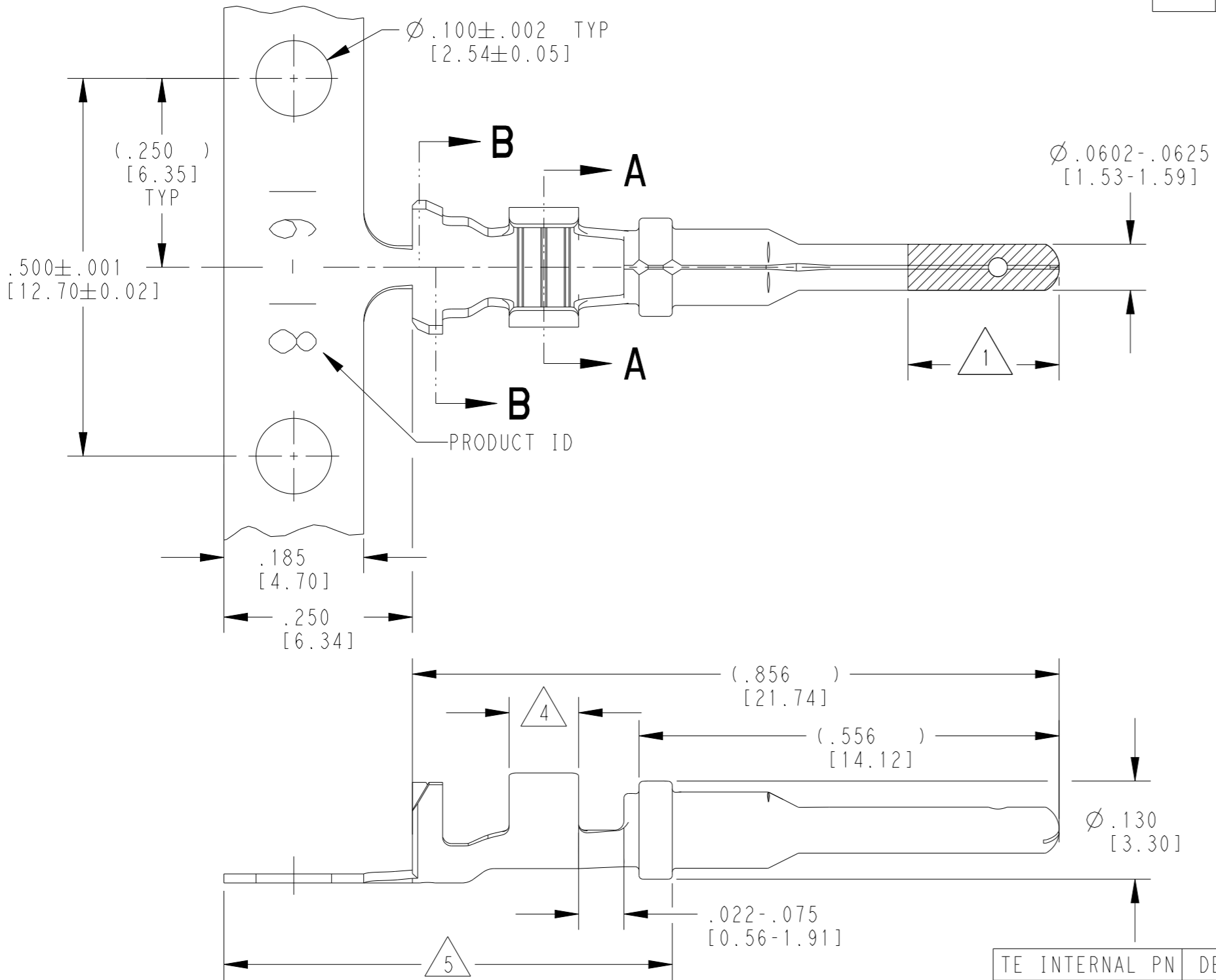


| LOC | DIST | REVISIONS                   |           |     |      |
|-----|------|-----------------------------|-----------|-----|------|
| P   | LTR  | DESCRIPTION                 | DATE      | DWN | APVD |
|     | J    | REVISED PER ECO-15-007761   | 28MAY2015 | RL  | DM   |
|     | K    | REVISED PER PCN E-20-008101 | 12JUN2020 | DM  | DM   |
|     | L    | REVISED PER PCN-21-121539   | 08DEC2021 | MK  | DM   |
|     | L1   | REVISED PER PCN-21-121539   | 04FEB2022 | MK  | DM   |




**SECTION A-A**  
WIRE BARREL

**SECTION B-B**  
INSULATION BARREL

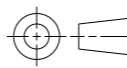
- $\triangle 5$  TIN PLATING MAY BE IN THIS REGION.
  - $\triangle 4$  TIN PLATED REGION.
  - $\triangle 3$  MATERIAL: .012 [0.30] THICK COPPER ALLOY
  - 2. WIRE RANGE: 18 AWG TO 14 AWG [0.75-2.0 mm<sup>2</sup>]  
INSULATION RANGE:  $\phi .075 - .140$  [ $\phi 1.91 - 3.56$ ]
  - $\triangle 1$  GOLD PLATED REGION.
- NOTES: UNLESS OTHERWISE SPECIFIED

| TE INTERNAL PN             | DEUTSCH PN   | PLATING   |
|----------------------------|--------------|---|
| 1060-16-0122               | 1060-16-0122 | Ni/Cu overall, Sn/Ni/Cu Wire Barrel               |
| $\triangle 1$ 1060-16-0144 | 1060-16-0144 | Selective Au, Ni/Cu overall, Sn/Ni/Cu Wire Barrel |
| 1060-16-0177               | 1060-16-0177 | Sn/Ni/Cu overall                                  |

THIS DRAWING IS A CONTROLLED DOCUMENT.

|                                 |  |  |                 |                    |                            |                    |
|---------------------------------|--|--|-----------------|--------------------|----------------------------|--------------------|
| DWN<br>M. BLUM<br>04NOV1999     | <br>TE Connectivity | NAME<br><b>STAMPED CONTACT</b><br>PIN<br>SIZE 16 | SIZE<br>A3      | CAGE CODE<br>4AFU8 | DRAWING NO<br>1060-16-01XX | RESTRICTED TO<br>- |
| CHK<br>A. ROLINSKI<br>08DEC2000 |  |  |                 |                    |                            |                    |
| APVD<br>R. REED<br>08DEC2000    |  |  |                 |                    |                            |                    |
| PRODUCT SPEC<br>108-151000      |  |  |                 |                    |                            |                    |
| APPLICATION SPEC<br>114-151000  | WEIGHT<br>0.33 g   | SCALE<br>6:1                                     | SHEET<br>1 OF 1 | REV<br>L1          |                            |                    |

Customer Drawing

| DIMENSIONS:<br>INCHES [mm]  | TOLERANCES UNLESS<br>OTHERWISE SPECIFIED: |
|---|---|
|  | 0 PLC ±                                   |
|   | 1 PLC ±                                   |
|   | 2 PLC ±                                   |
|   | 3 PLC ±.025 [0.64]                        |
|   | 4 PLC ±                                   |
|   | ANGLES ±                                  |
| MATERIAL<br>$\triangle 3$   | FINISH<br>SEE TABLE                       |